

2024



# INSPIRATION<sub>LE</sub>

Sectional Homes



THE STANDARD IN AFFORDABLE LUXURY

HOUSING AMERICAN FAMILIES SINCE 1971



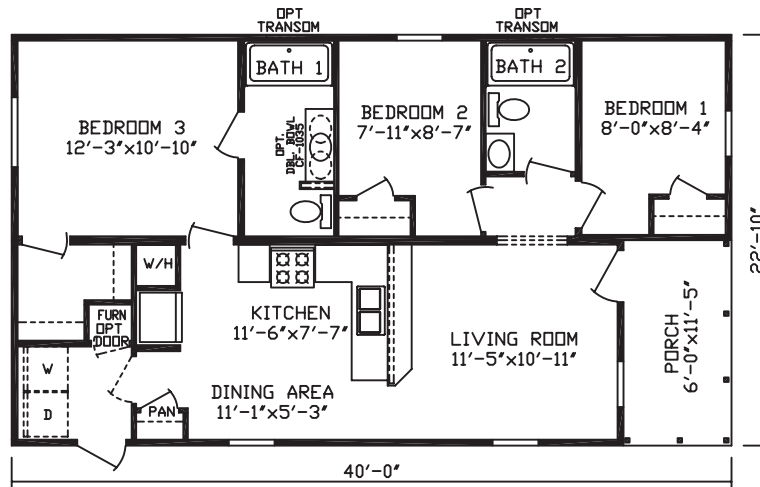
[fairmonthomes.com](http://fairmonthomes.com)

24 WIDES

# BURBANK

MODEL #24032

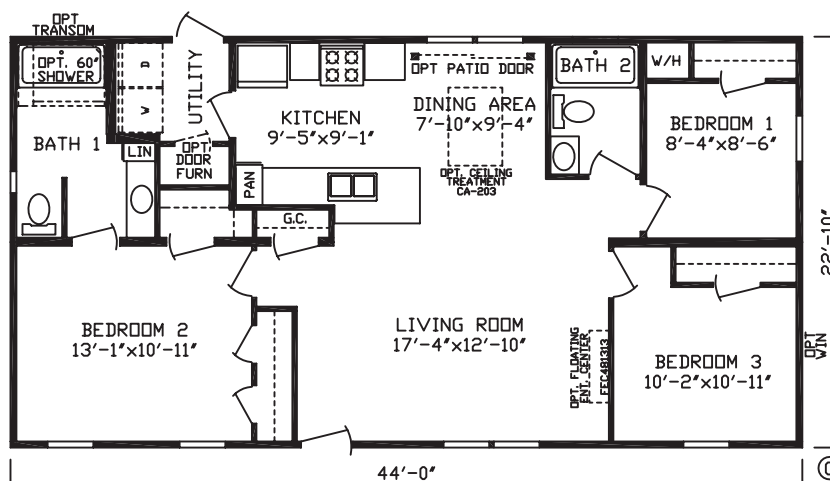
3 Br - 2 Bath - 847 Sq Ft



# SULLIVAN

MODEL #24017

3 Br - 2 Bath - 1,004 Sq Ft

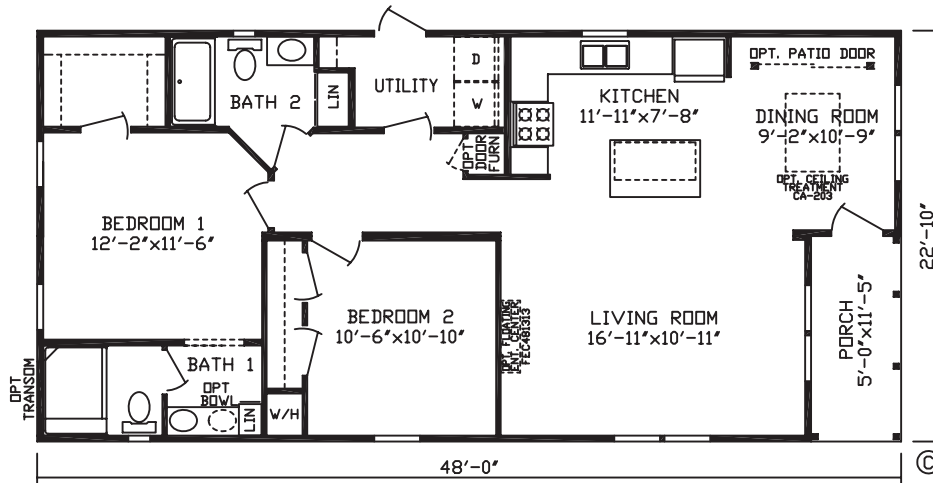


24 WIDES

# MCCARTNEY

MODEL #24014

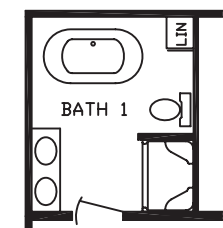
2 Br - 2 Bath - 1,039 Sq Ft



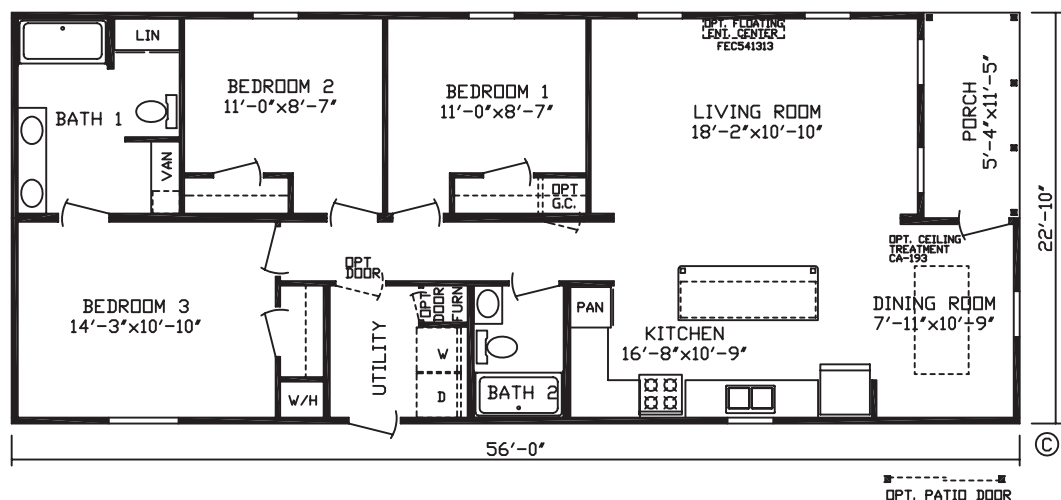
# BAUER

MODEL #24008

3 Br - 2 Bath - 1,218 Sq Ft



RO1 Opt Bath 1

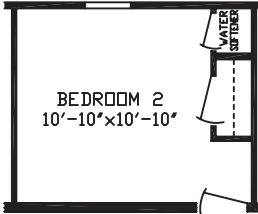


24 WIDES

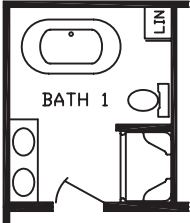
# SCHMIDT

MODEL #24003

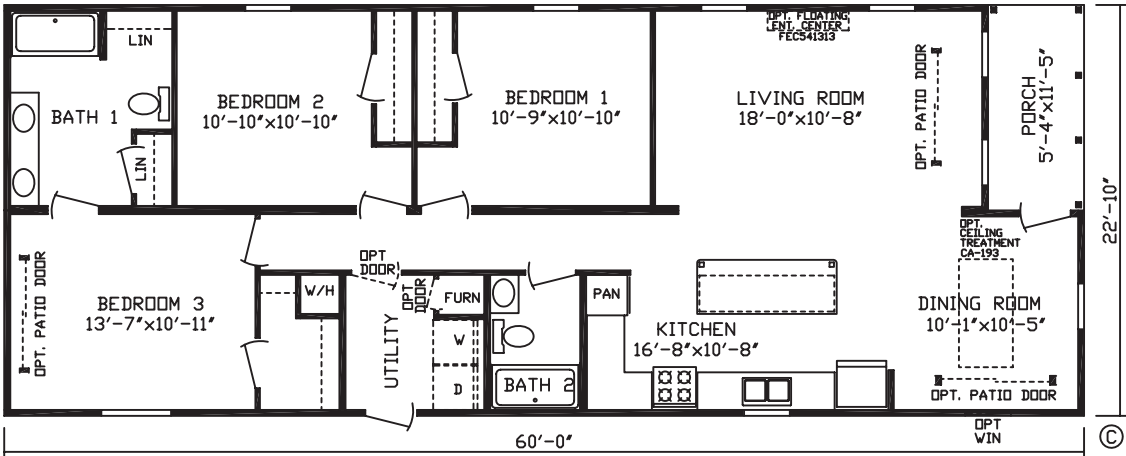
3 Br - 2 Bath - 1,309 Sq Ft



RO3 Opt W/S



RO1 Opt Bath 1

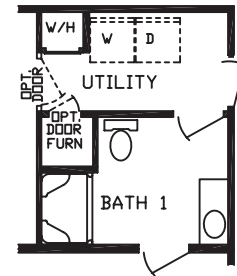
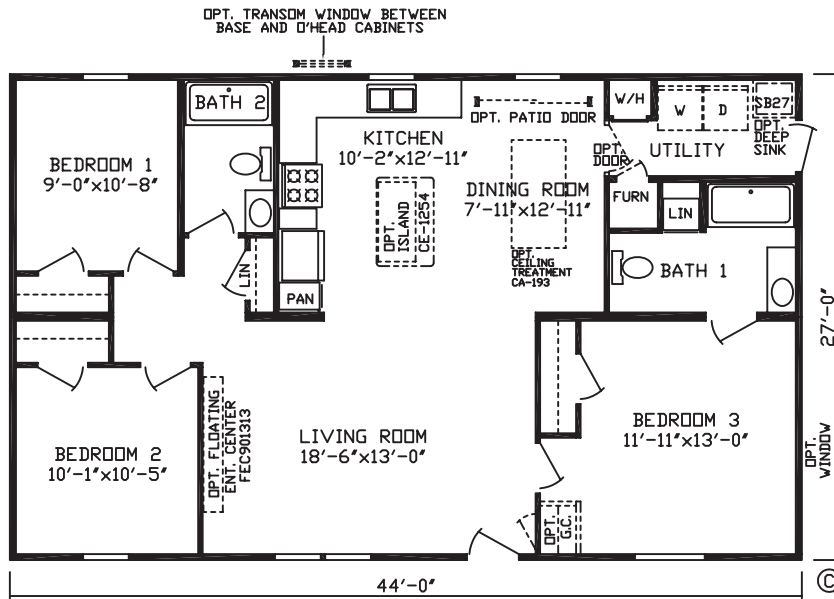


28 WIDES

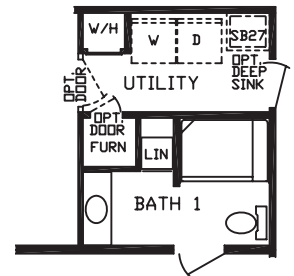
# HOWARD

MODEL #24000

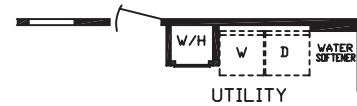
3 Br - 2 Bath - 1,188 Sq Ft



RO2 Opt Bath 1

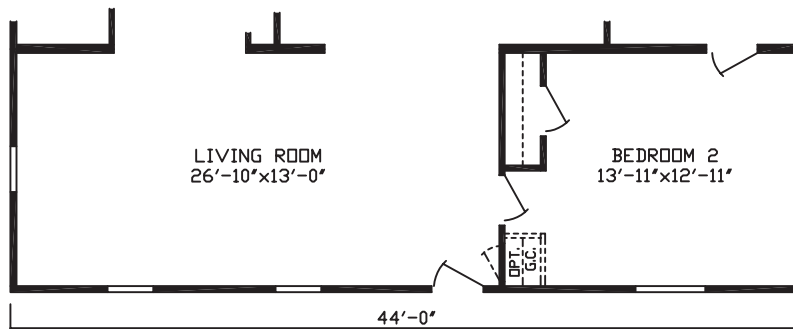


RO4 Opt Bath 1



DINING ROOM  
8'-0" x 12'-9"

RO3 Opt W/S



RO1 Opt 2-Bedroom

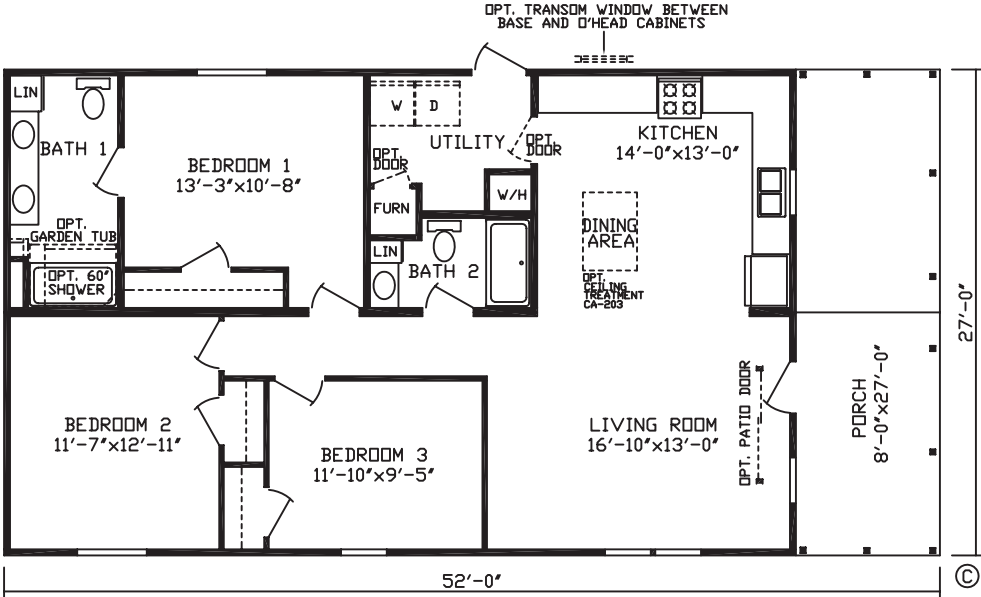


28 WIDES

# BACH

MODEL #24002

3 Br - 2 Bath - 1,188 Sq Ft



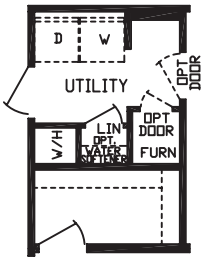


28 WIDES

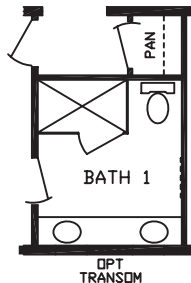
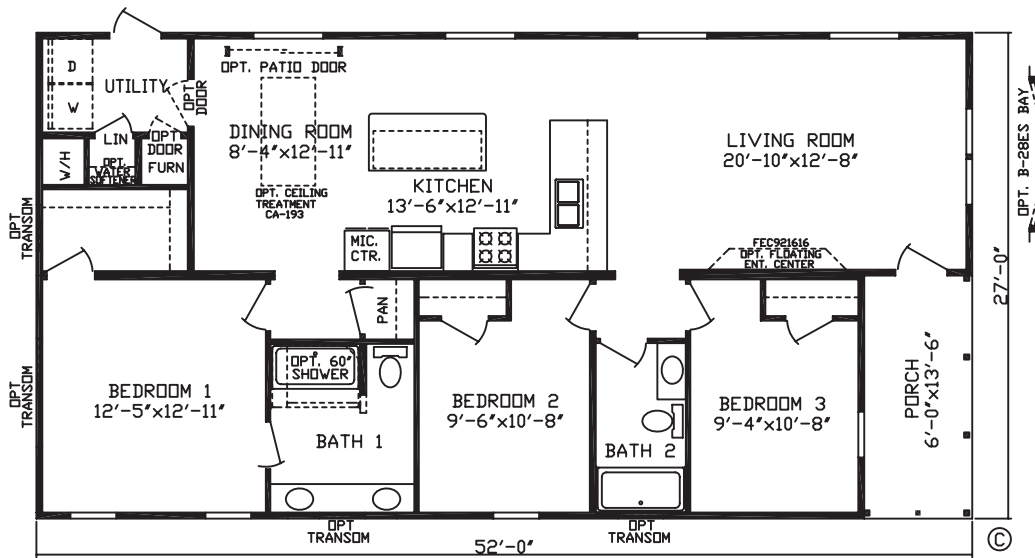
# FULTON

MODEL #24028

3 Br - 2 Bath - 1,324 Sq Ft



RO1 Opt Utility



RO2 Opt Bath 1



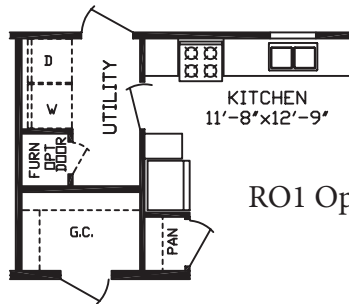


28 WIDES

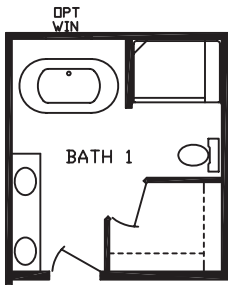
# PORTMAN

MODEL #24018

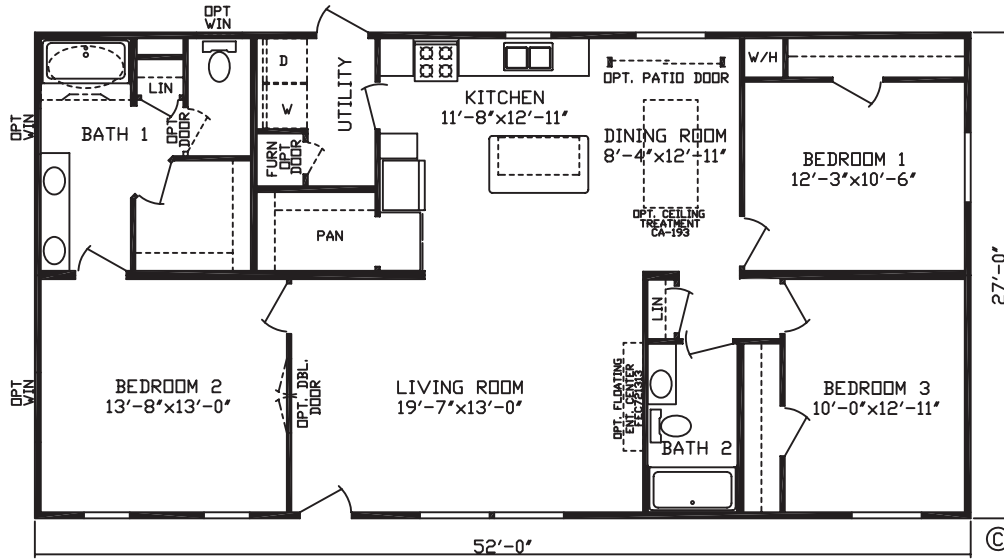
3 Br - 2 Bath - 1,404 Sq Ft



RO1 Opt Guest Closet



RO2 Opt Bath 1

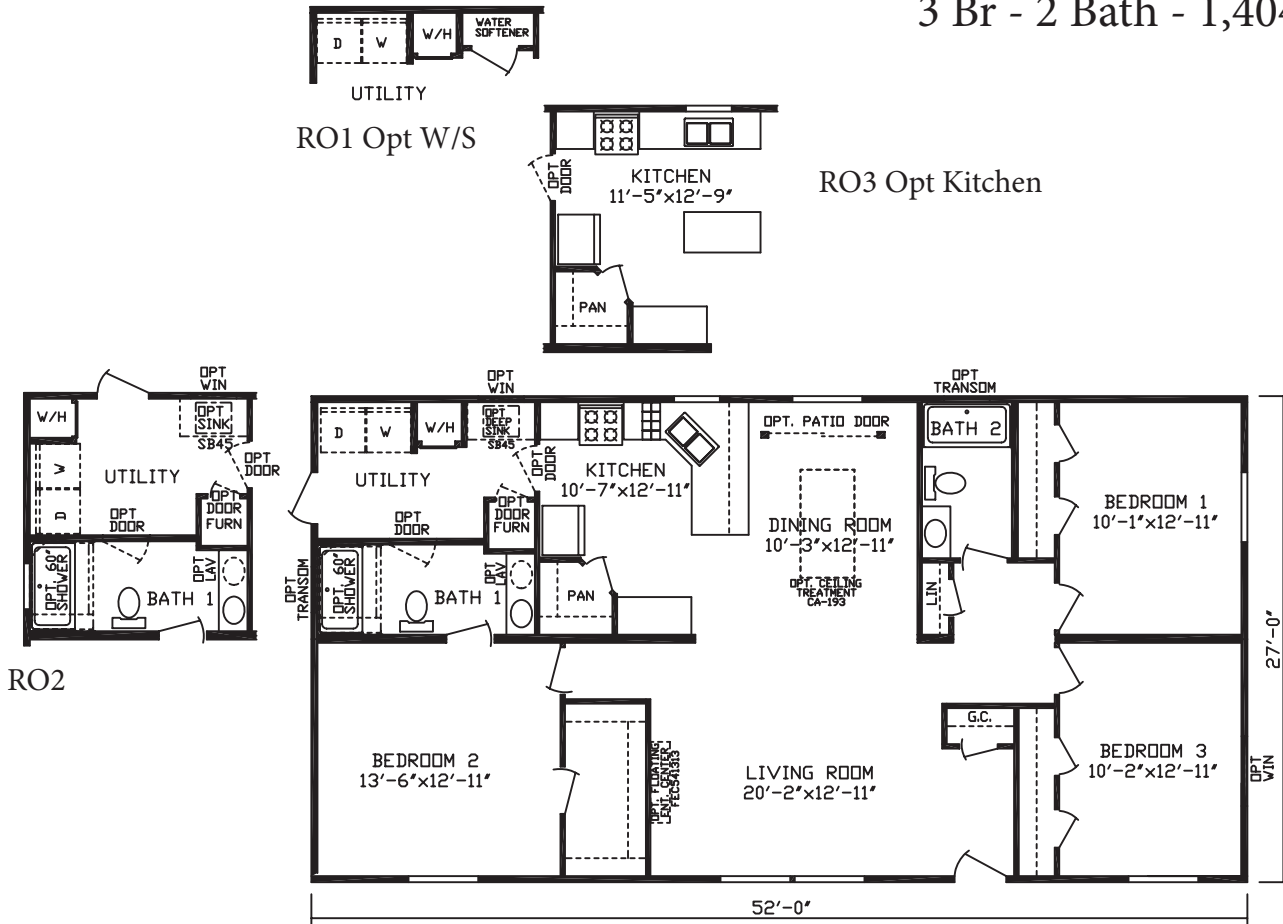


28 WIDES

FORD

MODEL #24021

3 Br - 2 Bath - 1,404 Sq Ft

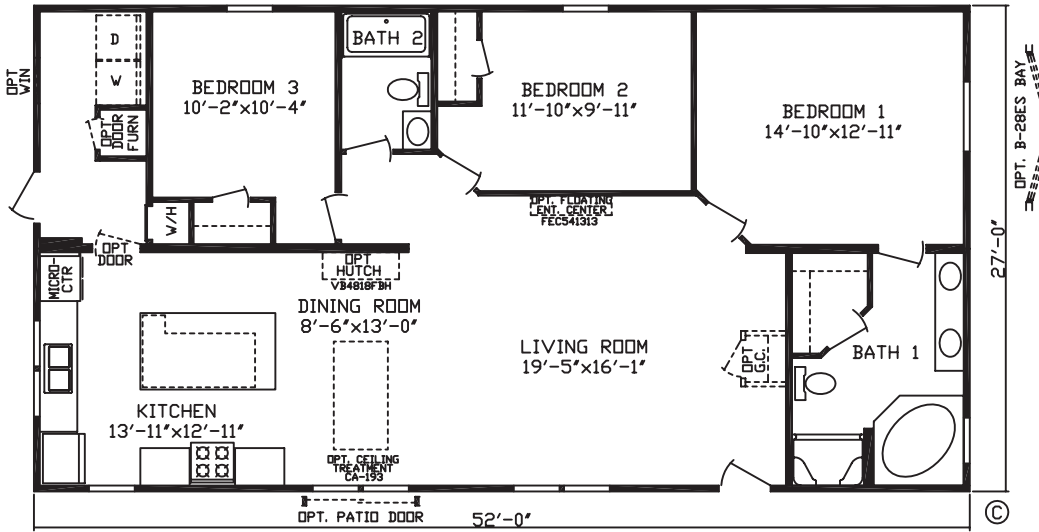


28 WIDES

# JOPLIN

MODEL #24030

3 Br - 2 Bath - 1,404 Sq Ft

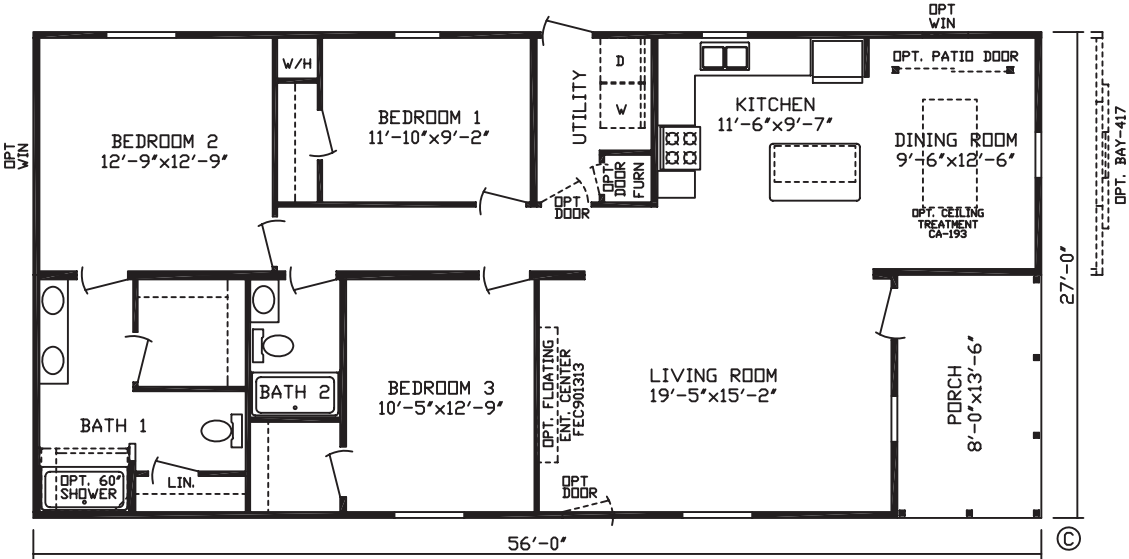


28 WIDES

# LAMONTE

MODEL #24001

3 Br - 2 Bath - 1,404 Sq Ft



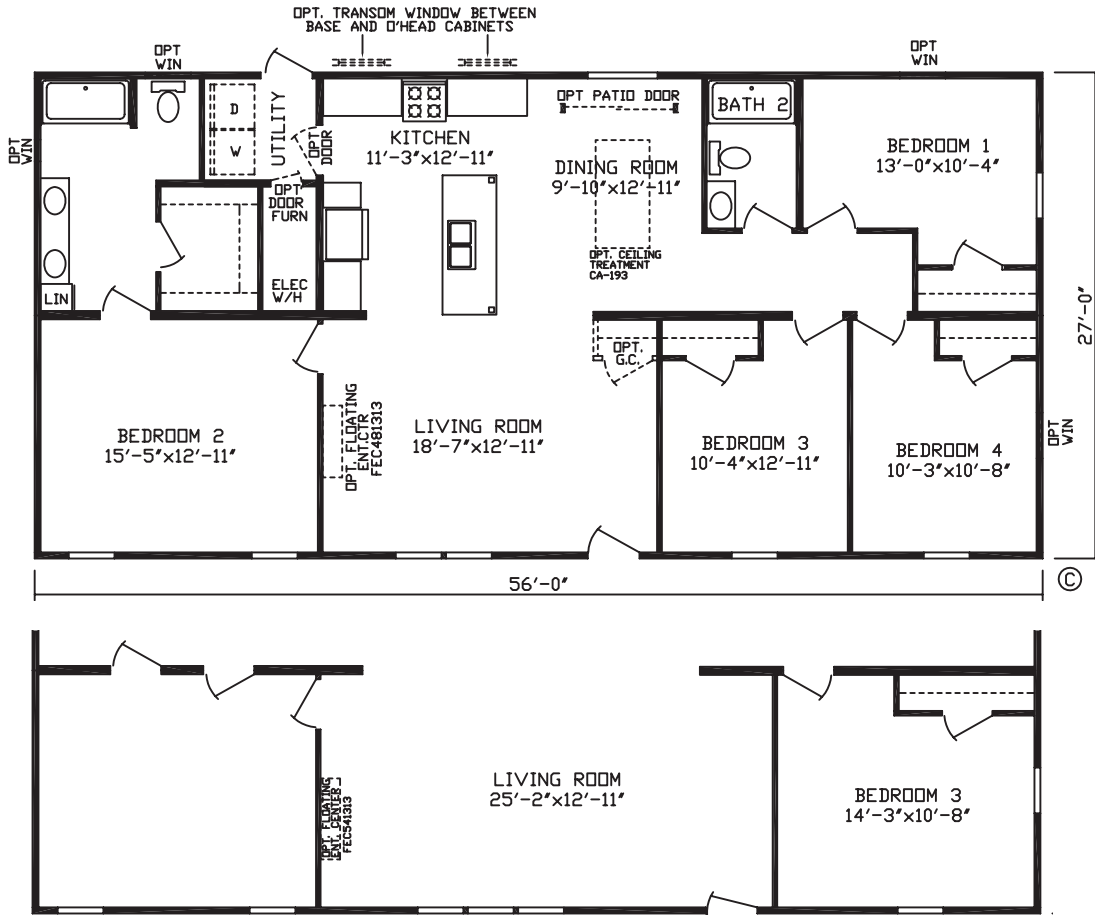


28 WIDES

# WILLIAMS

MODEL #24006

4 Br - 2 Bath - 1,512 Sq Ft



RO1 Opt 3-Bedroom



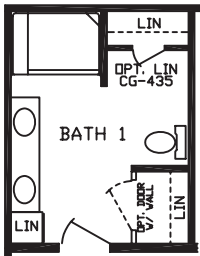
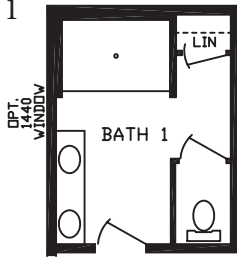
28 WIDES

# MANHATTAN

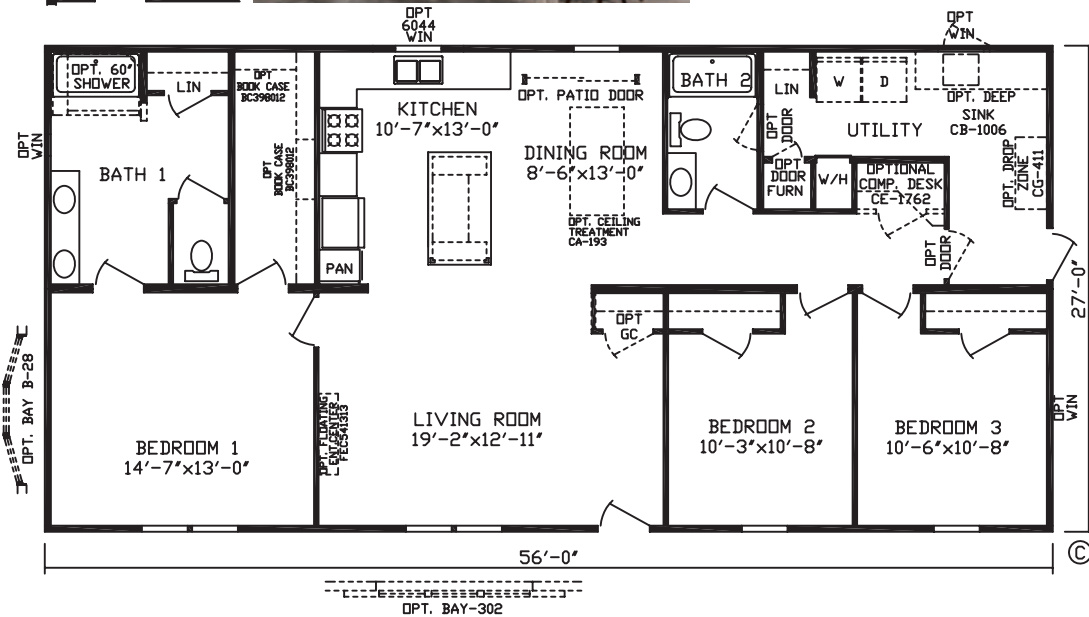
MODEL #24011

3 Br - 2 Bath - 1,512 Sq Ft

RO5 Opt Bath 1



RO1 Opt Bath 1



28 WIDES

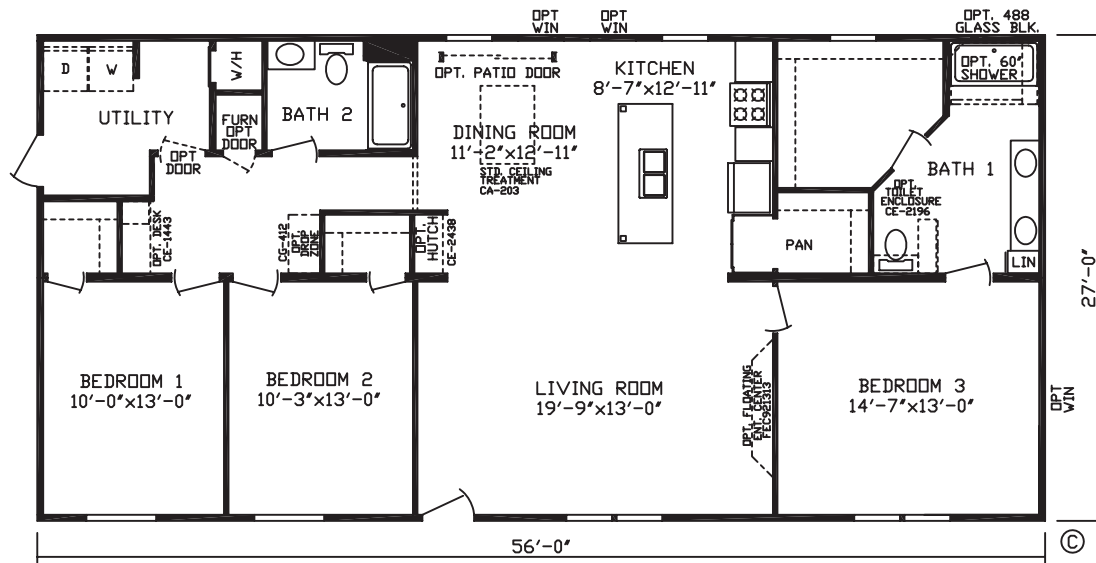
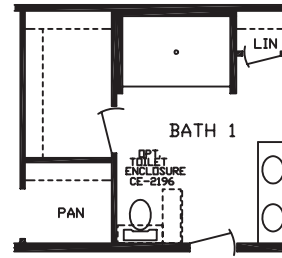
# GODDARD

MODEL #24027

3 Br - 2 Bath - 1,512 Sq Ft



RO1 Opt Bath 1





# 28 WIDES

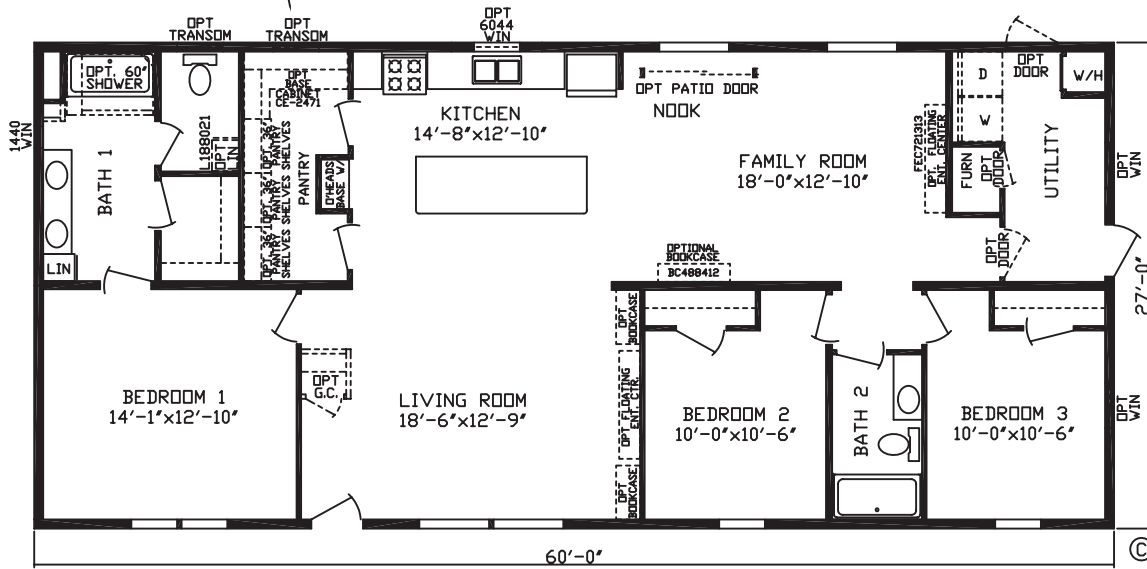
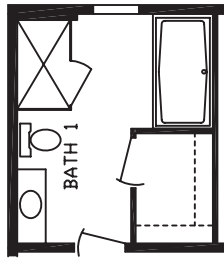
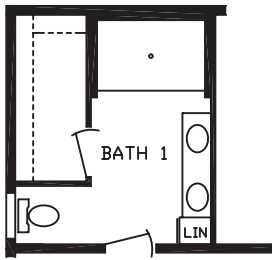
# IVES

RO1 Opt Tile Shower

RO2 Opt Bath 1 W/  
Shower & Tub

MODEL #24033

3 Br - 2 Bath - 1,620 Sq Ft



RO3 Opt 2 Bedroom

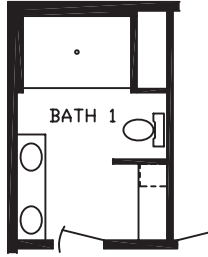


28 WIDES

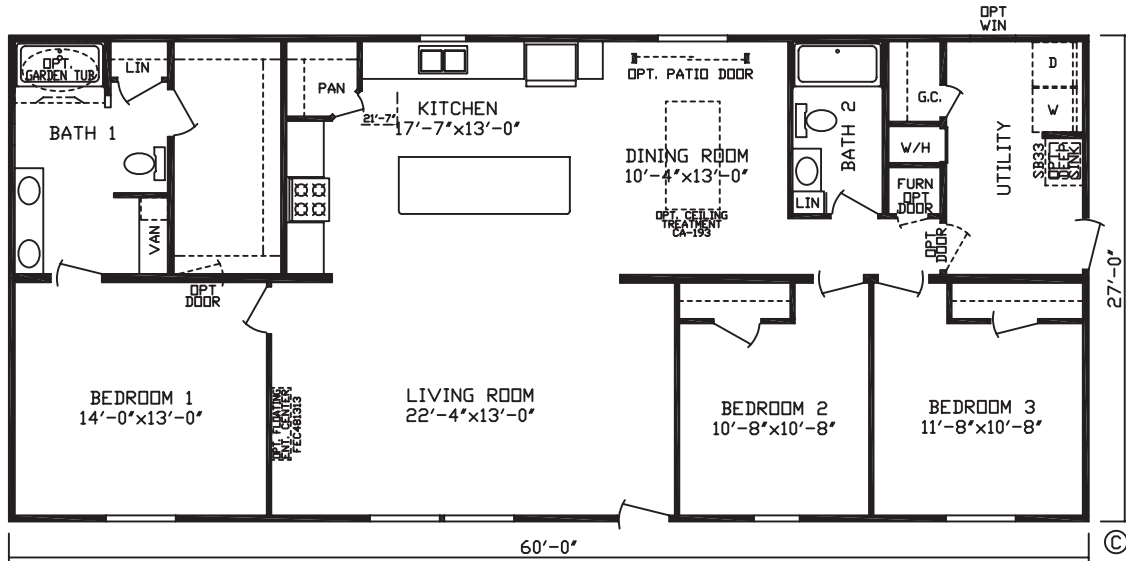
# STRAUSS

MODEL #24013

3 Br - 2 Bath - 1,620 Sq Ft



RO2 Opt Tile Shower



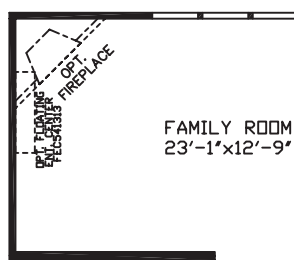
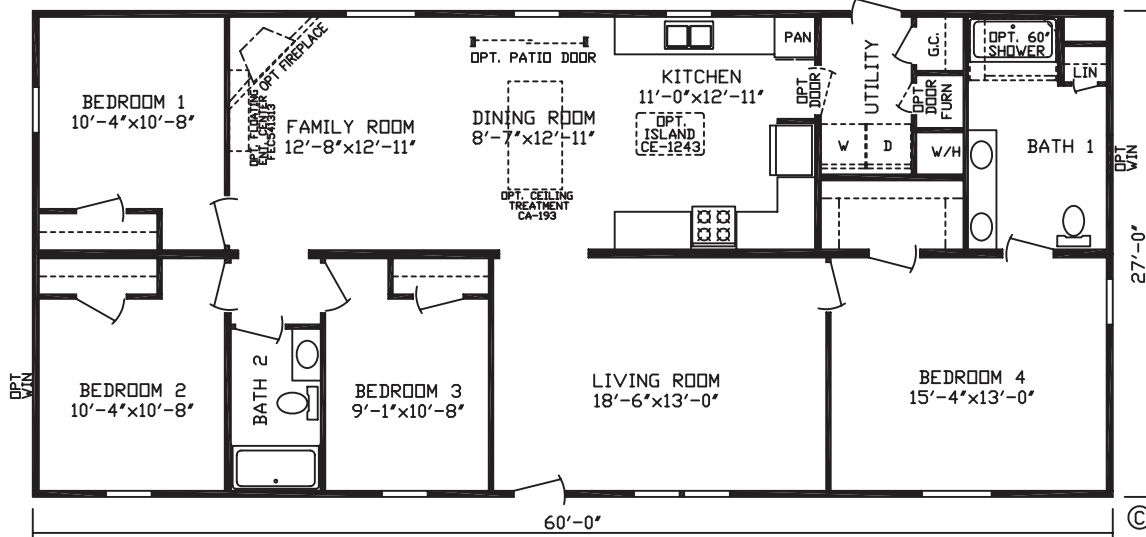
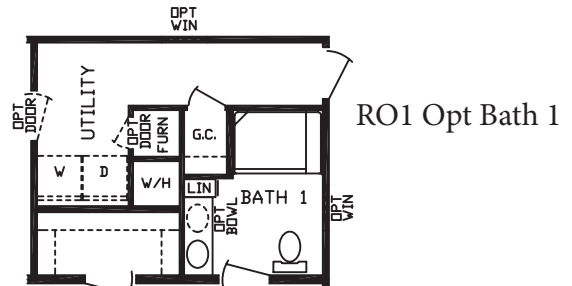
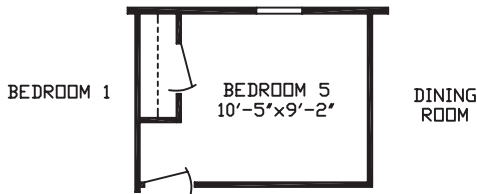
28 WIDES

# LEONARDO

MODEL #24025

4 Br - 2 Bath - 1,620 Sq Ft

RO2 Opt Bedroom 5



RO3 Opt Family Room

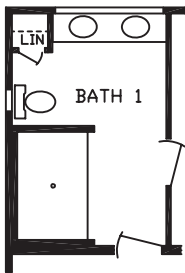




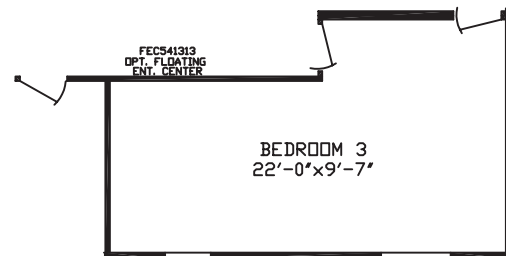
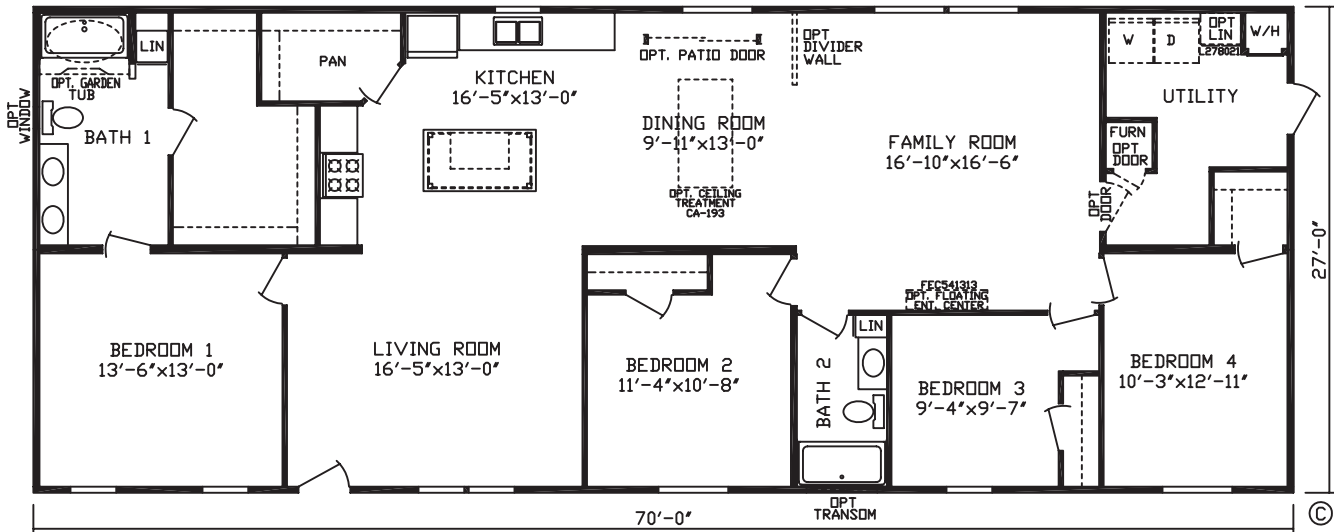
# MORSE

MODEL #24022

4 Br - 2 Bath - 1,890 Sq Ft



RO1 Opt Bath 1



RO5 Opt 3 Bedroom



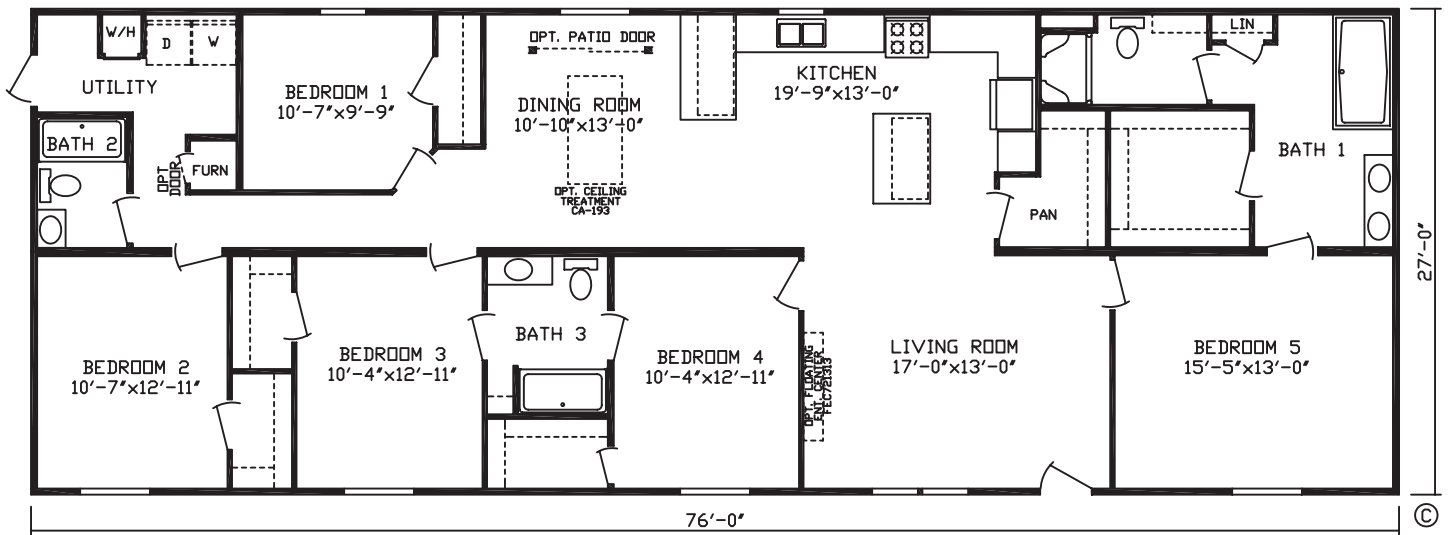
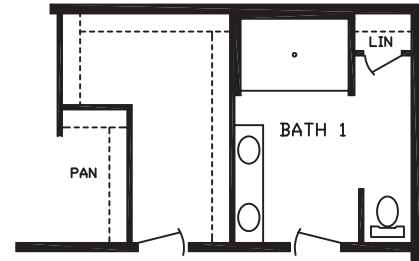
28 WIDES

# COLLIER

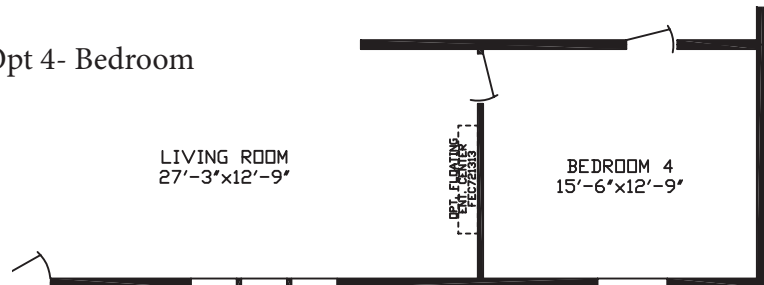
MODEL #24010

5 Br - 3 Bath - 2,052 Sq Ft

RO3 Opt Bath 1



RO1 Opt 4- Bedroom





# INSPIRATION<sub>LE</sub>

## Standard Features

## Sectional Homes

### Energy Saving Standard Features

- 7/16 OSB Exterior Sheathing
- R-29 Roof Insulation
- Gas Furnace
- Positive Operating System

### Exterior & Construction

- Nominal 3/12 Roof Pitch
- 8' Sidewall Height w/Flat Ceiling
- Rafters 24" O.C.
- 16" O.C. Floor Joists
- 19/32" Tongue & Groove 4'x8' OSB Floor Decking
- R-11 Floor Insulation
- Tamko 25 Year Shingled Roof
- Royal Double 4" Dutch Vinyl Lap Siding
- Ice & Water Barrier
- Exterior Weather Wrap
- Shutters Doorside
- 2x4 Exterior Walls

### Floor Coverings

- Shaw® Take Away Carpet
- Congoleum® Roll Goods
- Rebond Carpet Pad
- Roll Goods in Baths, Kitchen, Dining Room, Utility, Foyer & Some Bedrooms
- Tack Strip Carpet Installation in Bedrooms & Halls
- Carpet Bar Where Applicable

### Electrical

- Exterior GFI Weather Resistant Receptacle on Sidewall
- GFI Bath & Kitchen Receptacles

### Electrical (continued)

- Smoke & CO<sub>2</sub> Alarms
- Wire & Vent for Dryer
- Rust Coach Light at Front & Rear Door
- Recessed LED Can Lights — Dining Room, Bedrooms, 1 in Kitchen, 1 at Kitchen Sink
- 100 AMP Service

### Décor

- 1/2" Decorative Vinyl on Gypsum Walls
- Textured Stippled Ceilings
- 3-5/8" Crown Molding in Living Room, Dining Room, Kitchen & Hall w/Flat Trim in Remainder of Home
- 1-1/2" Door & Window Casings
- Mini Blinds Throughout
- Fabric Valances in Living Room & Bedrooms

### Plumbing

- Single Lever Bath Tub Faucet w/ Shower Head
- Plumbing for Washer
- 30 Gallon Electric Water Heater
- 7" Deep Stainless Steel Kitchen Sink
- 2 Handle Kitchen Faucet
- Main Water Shut-off Below Floor
- Water Heater Access Panel (Per Print)

### Baths

- 1-Piece Fiberglass Tub / Shower in Baths
- Pop-Up Drains on Bath Sinks w/ Overflows
- Power Exhaust Fan
- Formica Backsplash
- Frameless Mirrors
- Porcelain Lav

### Doors and Windows

- Easy Clean Tilt-Out Sash, Single-Hung Windows, Non Gridded
- Kinro® White Low-E Vinyl Windows
- 34" x 82" Decorator 6-Panel Steel Front Door w/Storm & Deadbolt
- 34" x 82" 9-Lite Cottage Rear Door
- Dead Bolt Security Lock on Steel Front Door
- Floor Mounted Door Stops
- Triple Hinged Interior Doors
- Pre-Hung 2-Panel White Interior Doors
- Nickel Interior Door Knobs

### Cabinetry

- 40" Overhead Kitchen Cabinets
- Shaker Style Wrapped Cabinetry w/Wrapped Stiles
- Hidden Hinges
- Dove Tail Drawer Construction
- Side Mounted Drawer Guides
- Formica Kitchen Backsplash
- Shelf in Washer / Dryer Area

### Appliances

- S.S. 18 CF Frost Free Refrigerator
- S.S. 30" Standard Gas Range
- S.S. Euro Range Hood



2181 East Market Street • Nappanee, IN 46550 • fairmonthomes.com

FAIRMONT HOMES — Built Better with Brand Name Components



Note: Fairmont Homes reserves the right to make changes in price, colors, materials, components and specifications and to discontinue models at any time without notice or obligation. Fairmont Homes assumes no responsibility for any error in type or print reproduction of specifications or floor plans in this brochure. ©2023 Fairmont Homes LLC, ALL RIGHTS RESERVED, Rev 01/2024