

2024



# FOXWOOD

A-277 CANADIAN Modular Homes



BUILT FOR CANADA

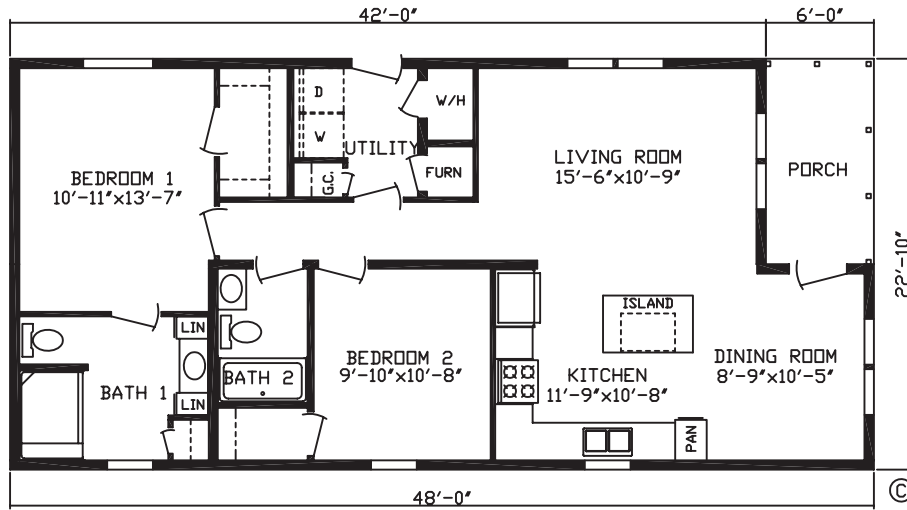


[fairmonthomes.com](http://fairmonthomes.com)

24 WIDES

# LAKE MANITOBA

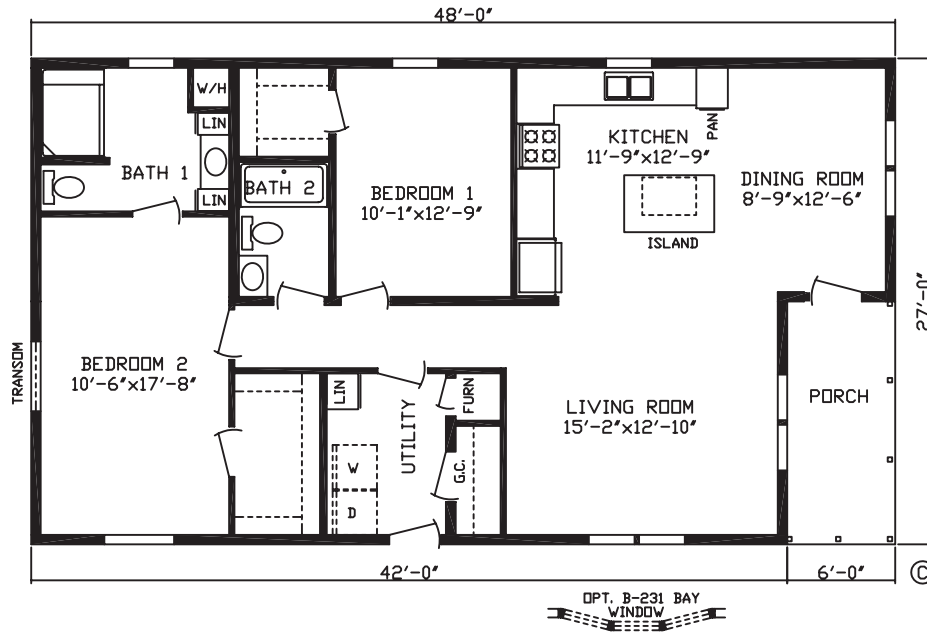
MODEL #146052  
2 Br - 2 Bath - 1,026 Sq Ft



28 WIDES

# REMI LAKE

MODEL #146042  
2 Br - 2 Bath - 1,215 Sq Ft

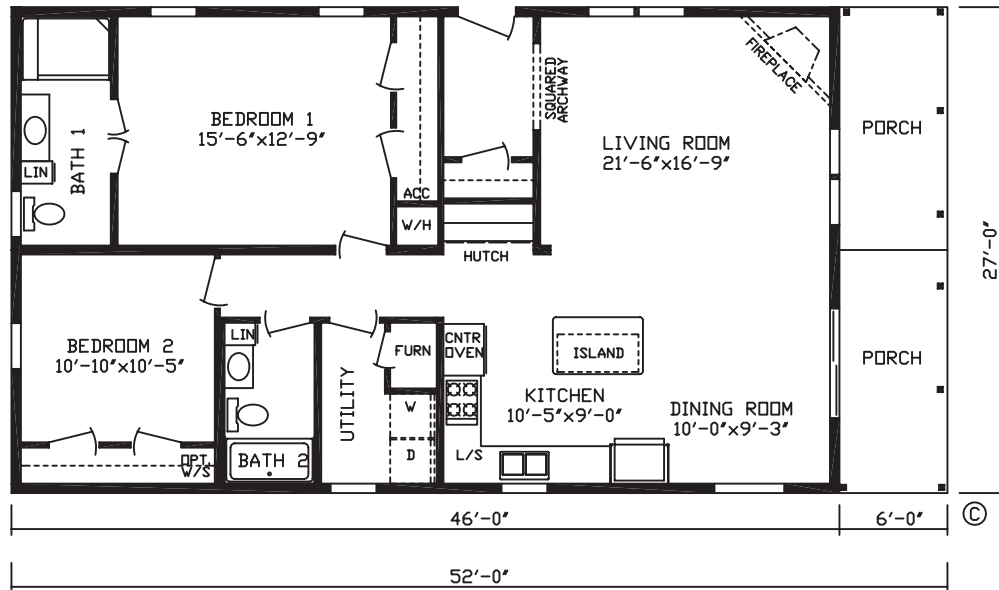


28 WIDES

# ALBANY

MODEL #146057

2 Br - 2 Bath - 1,242 Sq Ft

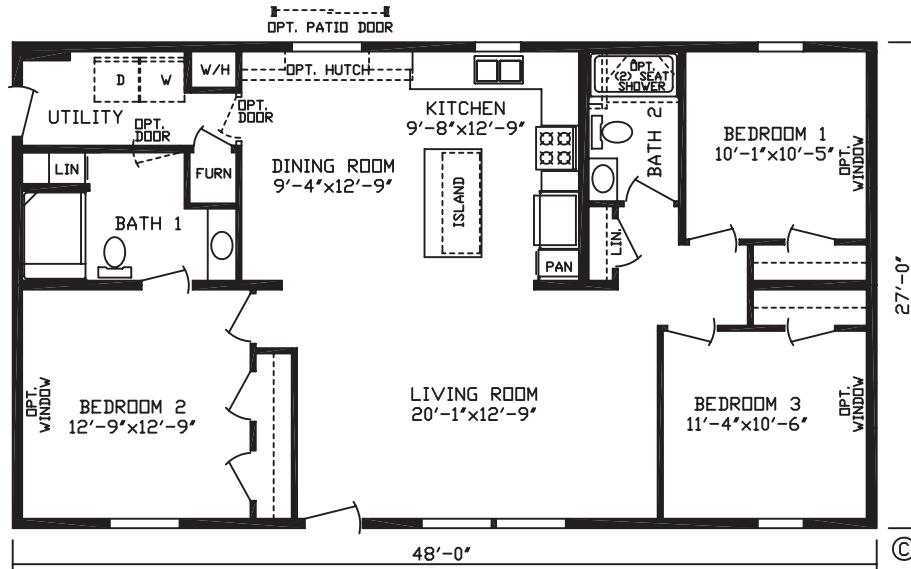


28 WIDES

# AUGUSTA

MODEL #146053

3 Br - 2 Bath - 1,296 Sq Ft

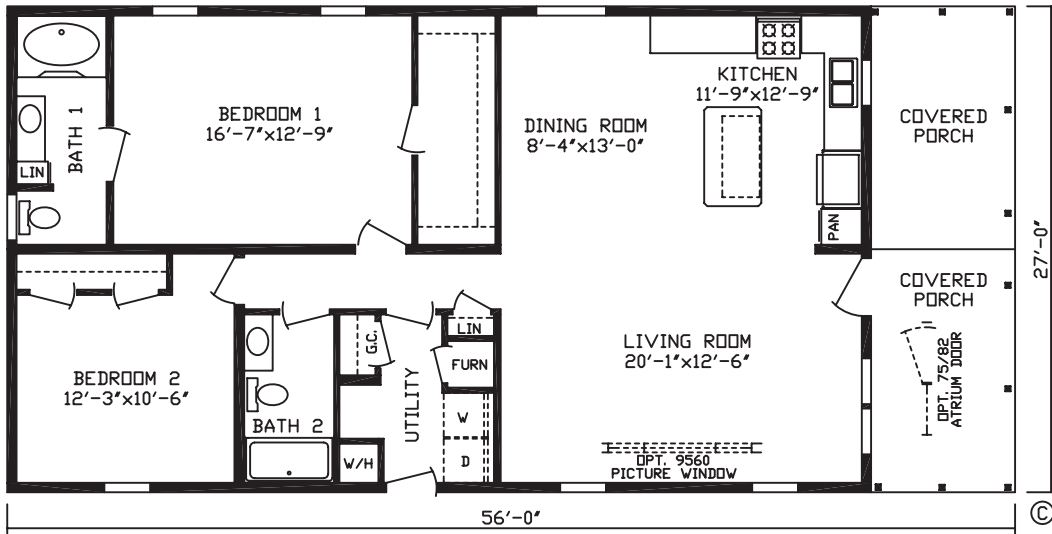


28 WIDES

# TROUT CREEK

MODEL #146027

2 Br - 2 Bath - 1,296 Sq Ft

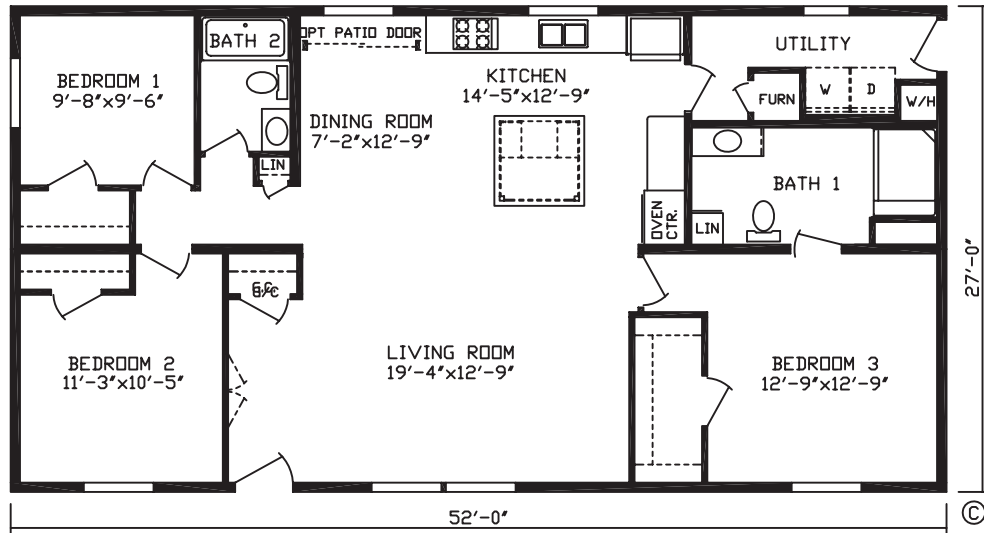


28 WIDES

# LAKE SIMCOE

MODEL #146058

3 Br - 2 Bath - 1,404 Sq Ft

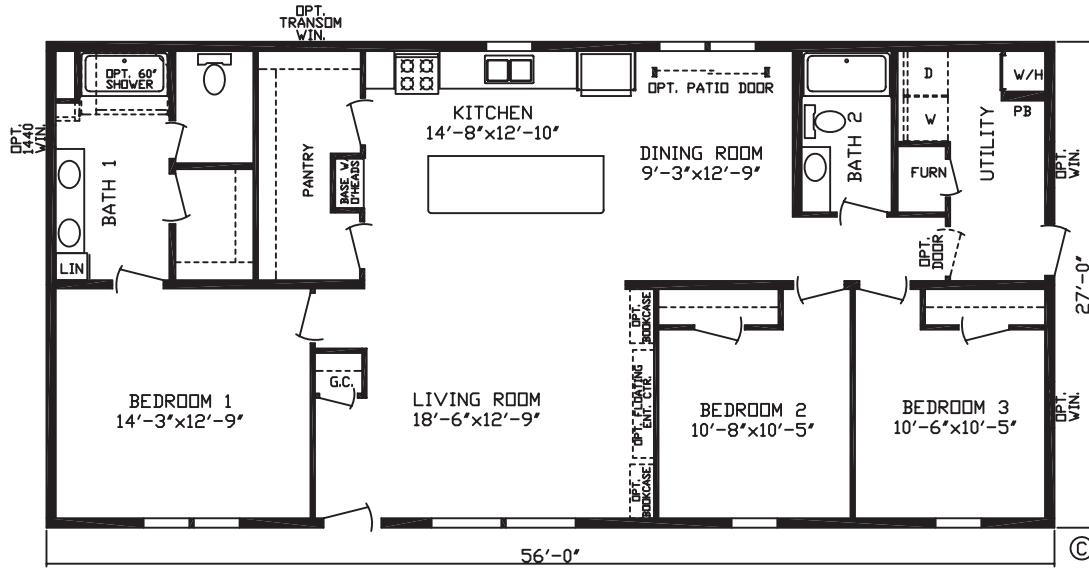


28 WIDES

# ABERDEEN

MODEL #146060

3 Br - 2 Bath - 1,512 Sq Ft



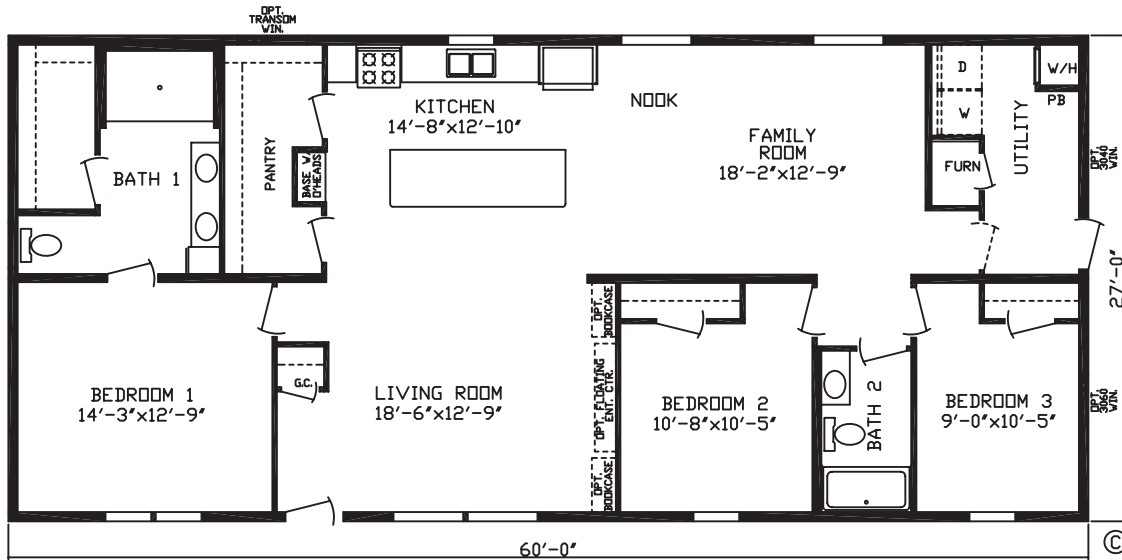


28 WIDES

# LANDMARK

MODEL #146061

3 Br - 2 Bath - 1,620 Sq Ft

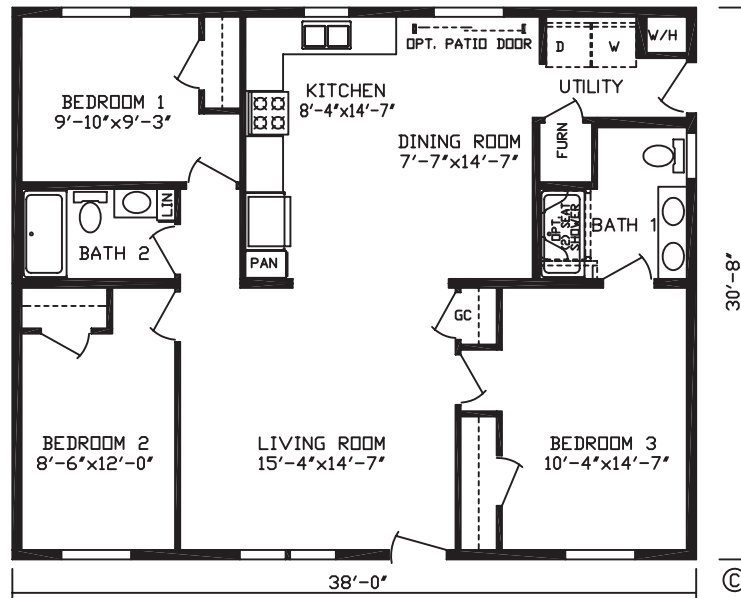


32 WIDES

# KINGSLEY

MODEL #146041

3 Br - 2 Bath - 1,165 Sq Ft

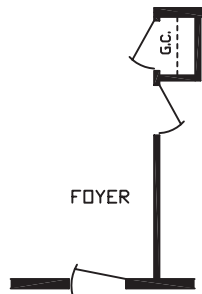
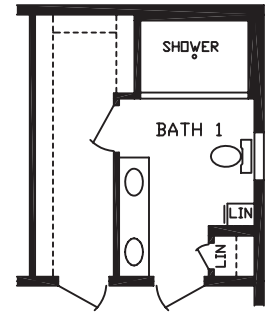
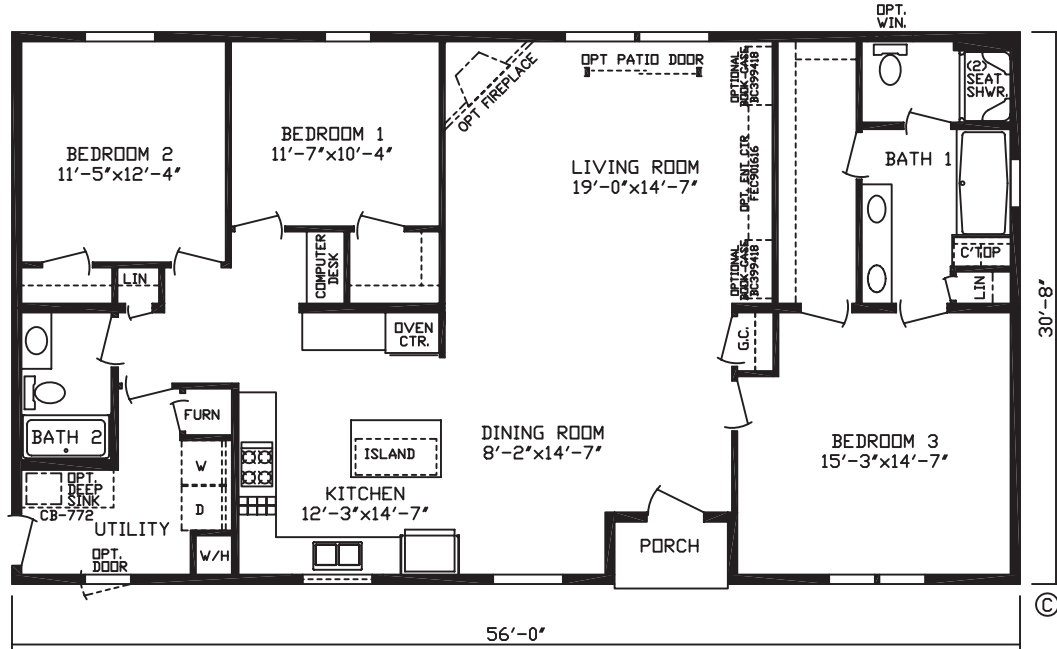


32 WIDES

# COBALT

MODEL #146059

3 Br - 2 Bath - 1,717 Sq Ft



# FOXWOOD

A-277 CANADA Modular Homes

## Standard Features

### Energy Savings

- Kinro® Low E Non Gridded Thermopane Windows
- HomeGuard™ Exterior Weather Wrap
- OSB Exterior Sheathing Sidewalls & Endwalls
- 6 Mil Vapor Barrier At Exterior Walls
- R-50 Roof Insulation
- 2x6 Sidewalls w/R-24 Sidewall Insulation
- R-31 Floor Insulation
- Trane® 95% Plus High Efficient Furnace
- Perimeter Heat
- Zone 1 Region Requirements

### Exterior & Construction

- 5/12 Roof Pitch
- 8' Sidewall Height w/Flat Ceilings
- 60 lb Ground Snow Load
- 2x10 Floor Joist 16 O.C.
- 19/32" OSB Tongue & Groove/Glued & Screwed 4' x 8' Floor Decking
- Interior Walls, 16' O.C.
- Shutters Doorside
- 4 1/2" Dutch Lap Vinyl Siding
- Owens Corning® Architectural Shingles
- 1/2" OSB Roof Decking
- Lauan Substrate At Exterior Walls

### Floor Coverings

- Shaw® 25 oz Polyester Carpet
- Congoleum® Linoleum (Foyer, Kitchen, Dining Room, Utility, Bathrooms)
- 5 lb Rebond Carpet Pad
- Tack Strip Carpet Installation

### Electrical

- 100 Amp Breaker Box
- (2) Exterior GFI Weather Resistant Receptacle
- Craftsman Exterior Light at Front & Rear Doors

### Plumbing

- 50 Gallon Electric Water Heater w/Double Element
- 7" Stainless Steel Kitchen Sink
- Water Shut Off Valves At Sinks & Commodes
- Main Line Water Shut Off Valve at Water Heater
- Frost Free Faucet
- Pex Water Line System
- Plumb For Washer & Dryer
- HRV Unit & HRV Ductwork

### Bathrooms

- 1 Piece Fiberglass Tubs
- Elongated Commodes
- Porcelain Sinks
- 2 Arm Lights Over Bathroom Sink
- Toe Kick Heat Registers (Where Applicable)

### Cabinetry

- 40" Overhead Custom Design Kitchens
- Shaker Rustic Shore Mortise & Tenon Cabinet Doors
- Hardwood Cabinet Stiles, Pre-Drilled & Screwed
- Adjustable Hidden Hinges
- 3 1/2" Crown Molding Above Kitchen Cabinets
- High Pressure Laminated Countertops
- Drawer Above Base Cabinets In Kitchen
- Cabinets Over Refrigerator
- Breaker Box Cover
- Dovetail Drawers
- Refrigerator Enclosure

### Décor

- Finished 1/2" Drywall Throughout
- Madison Drape Package
- Mini-Blinds
- 2 1/4" Door & Window Casing
- 3 5/8" Ceiling Cove in Living Areas
- 3 1/2" Base Shoe Molding
- Brushed Nickel Hardware & Cabinet Pulls
- Stippled Ceiling

### Doors

- 38x82 White Decorator Front Door w/Storm & Deadbolt
- 34x82 White Decorator Rear Door w/Storm & Deadbolt
- 2 Panel White Interior Doors
- Furnace Door

### Appliances

- 18 CF S.S. Frost Free Refrigerator
- 30" S.S. Standard Clean Gas Range w/Shut Off (Unless Specified as Wall Oven / Microwave Combo & Surface Unit Standard per Floor Plan)
- S.S. Dishwasher
- Range Hood



2181 East Market Street • Nappanee, IN 46550 • fairmonthomes.com



FAIRMONT HOMES — Built Better with Brand Name Components



All descriptive representations of products in this brochure are believed to be accurate at the time of publication. However, due to product improvement and changes in suppliers, design and production may vary. Some optional items shown and some images depicted in this brochure show porches, garages, or breezeways that are built on site by others.

© 2022 Fairmont Homes, LLC Rev 01/2024