

Single & Double Wide Homes

# VELOCITY



## LUXURY and VALUE

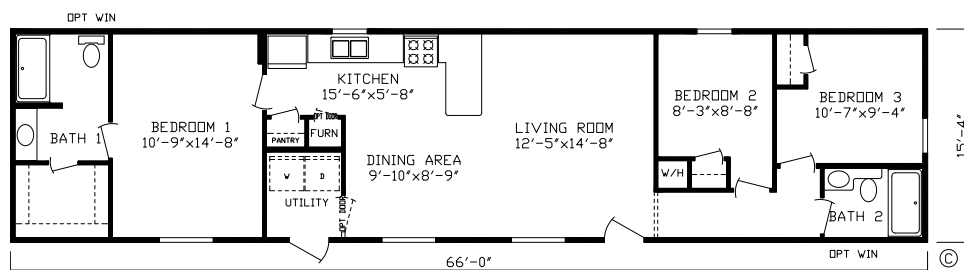
Exceed your Expectations with Fairmont Homes



[fairmonthomes.com](http://fairmonthomes.com)

# 16 WIDES

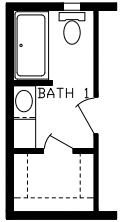
DOVER 188504 • 3 Br • 2 Bath • 1,012 Sq Ft



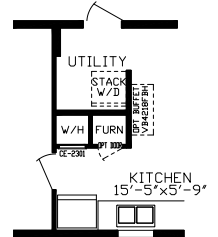
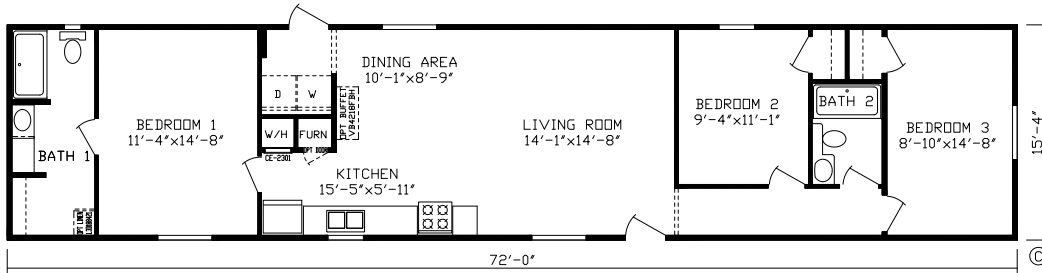
# VELOCITY

16 WIDES

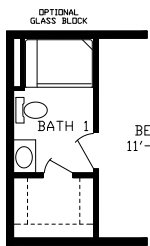
ELDORA 188500 • 3 Br • 2 Bath • 1,104 Sq Ft



RO2 Opt Bath



RO1 Opt Utility



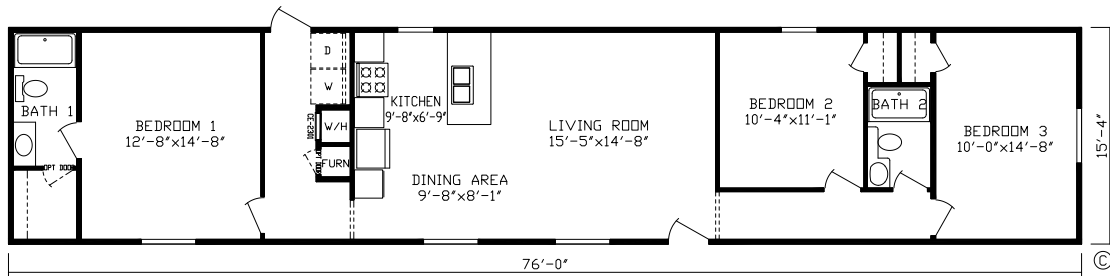
RO3 Opt Bath



Renderings may differ from floor plans

# 16 WIDES

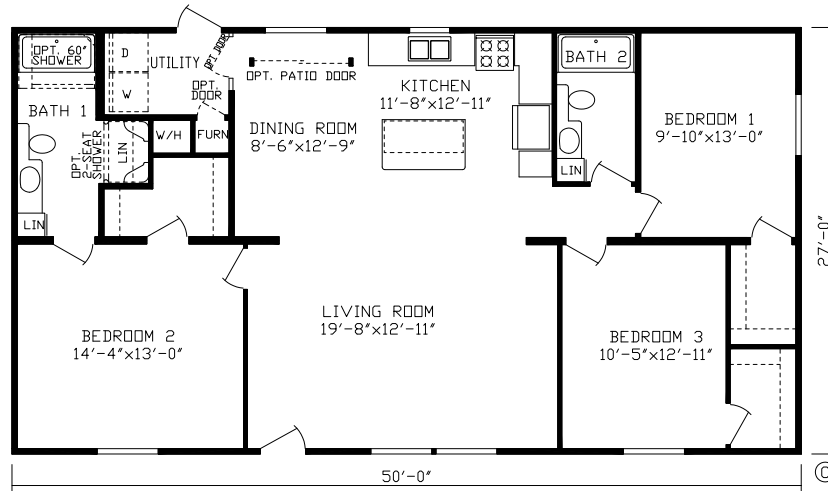
HOMESTEAD 188502 • 3 Br • 2 Bath • 1,165 Sq Ft



# VELOCITY

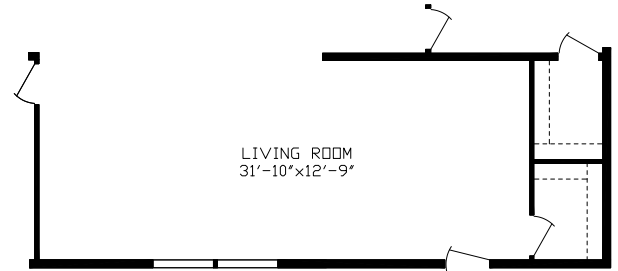
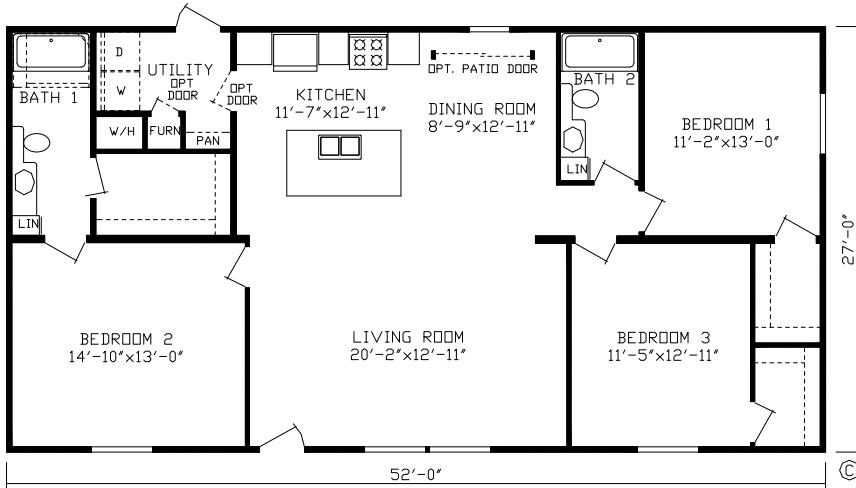
28 WIDES

POCONO 188001 • 3 Br • 2 Bath • 1,350 Sq Ft

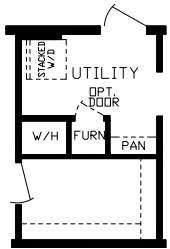


# 28 WIDES

DAYTONA 188000 • 3 Br • 2 Bath • 1,404 Sq Ft



RO1 Opt 2 Bedroom



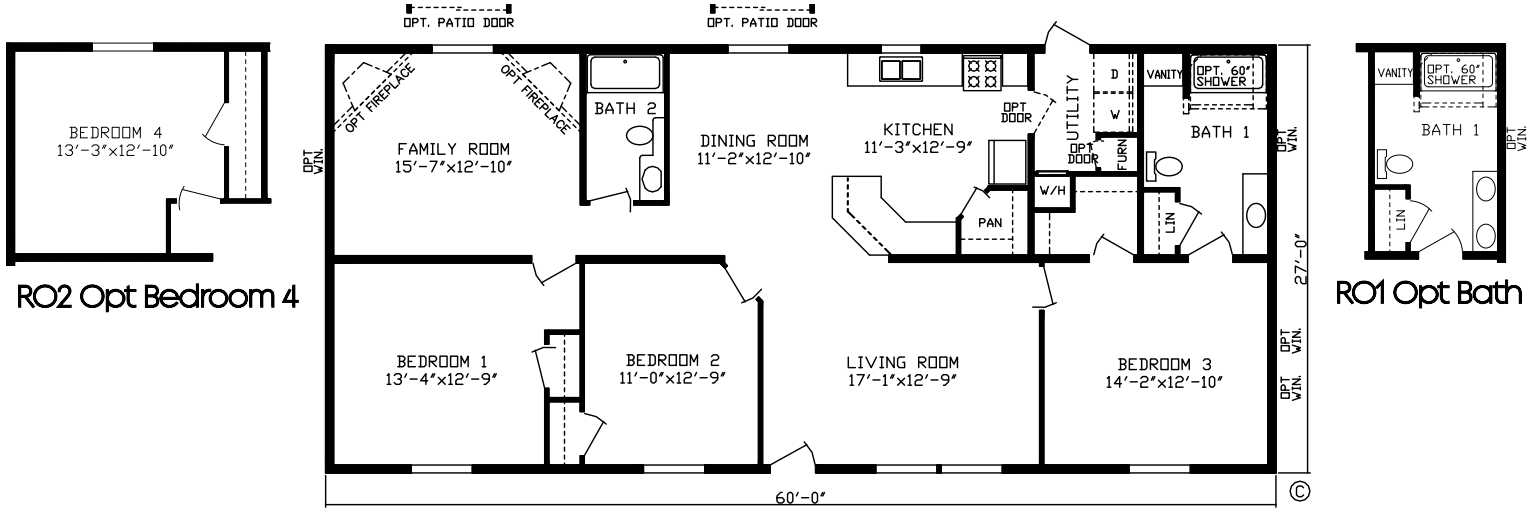
RO2 Opt Utility



# VELOCITY

28 WIDES

SONOMA 188003 • 3 Br • 2 Bath • 1,620 Sq Ft



Renderings may differ from floor plans

# VELOCITY

## Standard Features

### Energy Saving Standard Features of the Velocity Home

- Foam Sealant Air Infiltration Barriers (All Windows & Doors)
- R-29 Roof Insulation
- 2x4 Sidewalls with R-11 Insulation
- Gas Furnace
- Positive Operating System

### Exterior & Construction

- Nominal 3/12 Roof Pitch
- 8' Sidewall Height w/ Flat Ceiling
- Rafters 24" O.C.
- 16" O.C. Floor Joists
- 19/32" Tongue & Groove OSB Floor Decking
- R-11 Floor Insulation
- Owens Corning® 25 Year Shingled Roof
- Royal® Double 4" Dutch Vinyl Lap Siding
- Ice & Water Barrier
- Paneled Shutters (Hitch End Only on Single Wides & Door Side Only on Double Wides)
- Front Door Siding Color Accent

### Floor Coverings

- Shaw® Take Away Carpet
- 5 Pound Rebond Carpet Pad
- Congoleum® Armormor® Roll Goods
- Roll Goods in Baths, Kitchen, Dining Room, Utility & Foyer
- Tack Strip Carpet Installation in Living Room, Bedrooms, Halls
- Carpet Bar Where Applicable

### Electrical

- Exterior GFI Weather Resistant Receptacle on Sidewall
- GFI Bath & Kitchen Receptacles
- Smoke Alarms
- Wire and Vent for Dryer
- Porch Light at Front & Rear Doors
- Recessed LED Can Lights in Kitchen, Dining Room & Bedrooms
- 100 AMP Service

### Décor

- 1/2" Decorative Vinyl on Gypsum Walls
- Textured Stippled Ceilings
- 1-1/2" Door & Window Casing
- Mini Blinds Throughout
- Fabric Valances Over Windows in Living Room, Dining Room, Family Room & Kitchen

### Plumbing

- Plumbing for Washer
- 30 Gallon Electric Water Heater
- 7" Deep Stainless Steel Kitchen Sink
- Kitchen Faucet w/Soap Dispenser
- Main Water Shut-Off Below Floor
- Water Heater Access w/ Chalkboard Panels (Per Print)

### Baths

- 1 Piece Fiberglass Tub in Baths
- Pop-Up Drains on Bath Sinks w/ Overflows
- Power Exhaust Fan
- Lav Mirrors w/Clips
- Porcelain Lavs

### Doors & Windows

- Kinro® White Low-E Easy Clean Tilt-Out Sash, Single-Hung Thermopane Windows – No Grids
- 34" x 82" Decorator 6 Panel Steel Front Door w/Storm & Deadbolt
- 34" x 82" 9-Lite Cottage Rear Door
- Dead Bolt Security Lock on Steel Front Door
- Wall Mounted Door Stops
- Triple Hinged Interior Doors
- Pre-Hung 6-Panel White Interior Doors
- Satin Nickel Interior Door Knobs

### Cabinetry

- 30" Overhead Kitchen Cabinets
- Wrapped Face Frames/Wrapped Cabinetry/No Hardware/Shaker Style
- OH Cabinets w/Adjustable Shelves
- Hidden Hinges
- Dove Tail Drawer Construction
- Side Mounted Drawer Guides
- Shelf over Refrigerator & Range
- Wire Shelving in Pantry & Linen

### Appliances

- S.S. 18 CF Frost Free Refrigerator
- S.S. 30" Standard Gas Range
- 30" Range Hood



2181 East Market Street • Nappanee, IN 46550 • [fairmonthomes.com](http://fairmonthomes.com)

FAIRMONT HOMES — Built Better with Brand Name Components



Note: Fairmont Homes reserves the right to make changes in price, colors, materials, components and specifications and to discontinue models at any time, without notice or obligation. Fairmont Homes assumes no responsibility for any error in type or print reproduction of specifications or floor plans in this brochure. ©2022 Fairmont Homes LLC, ALL RIGHTS RESERVED, Rev 03/2022